

Cipla

For **OAD** diagnosis,
SIMPLIFY WITH

Spirofy[®]

spirometer

A Pneumotach-Technology
based Portable Spirometer



Diagnostic test must be performed
under medical supervision only.

OAD: Obstructive Airway Disease

Disclaimer: Images/Character shown is only for illustration.



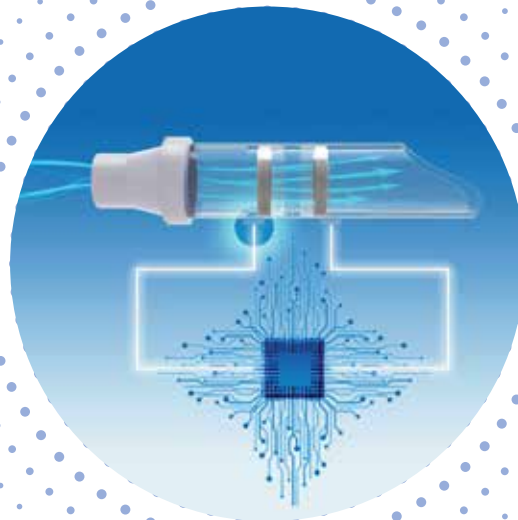
A Pneumotach-Technology based Portable Spirometer



Patient Centric Design

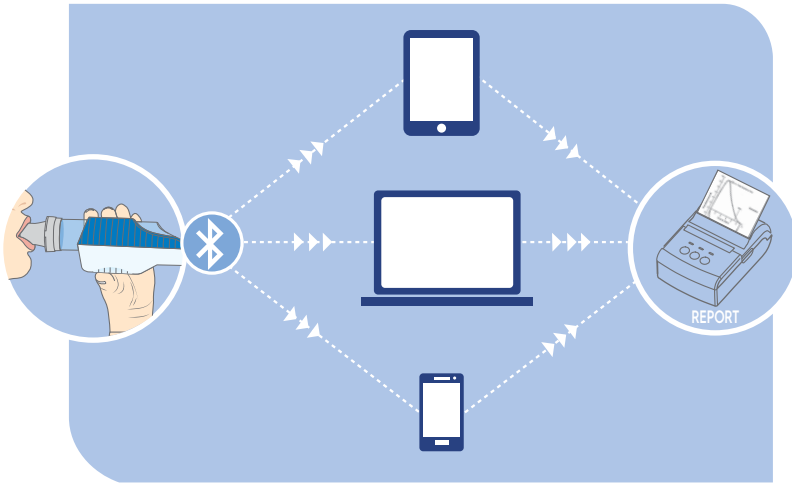
- Ergonomic Design
- Lightweight Device (200gms)
- New airway for each patient
- Good battery life

Diagnostic test must be performed under medical supervision only.



Advanced Pneumotach Technology

- Ensures more accurate diagnosis
- Less susceptible to wear-and-tear
- Accurate for a long period of time



Universal Software Compatibility

- Compatible with any mobile/laptop/tab
- Supports iOS, Android, and Windows
- Stores results over the cloud



Post-Sales Service and Training

- 24x7 call-center support
- Service support for all issues
- Free 6-monthly calibration
- Free training modules



Spirofy®

spirometer

A Pneumotach-Technology based Portable Spirometer



Perform a test on **Spirofy®**



Get the **report** on the app



Print the report instantly



SCAN
the QR code
to know more
or call 18002020060



For any further information, please contact:

Cipla

Cipla Ltd.
Cipla House, Peninsula Business Park,
Ganpatrao Kadam Marg,
Lower Parel, Mumbai-400 013, India.
Website: www.cipla.com

Disclaimer: This detailer is meant only for communication with the Registered Medical Practitioner. Copying, circulation or reproduction of this is strictly prohibited. Any unauthorized person having possession of this document should discard the same or inform/ notify/ return to Cipla Ltd. Prescription of the drug is the prerogative of Registered Medical Practitioner at his /her sole discretion. Images/Character shown is only for illustration.